



IME

INTERNATIONAL MARINE EXPERTS

When Experience is Needed,
Trust the Experts

Ship's Classification and Its Implication on Marine Insurance Underwriting



Eng. Javier Bru.

CEO – International Marine Experts (IME)

Cape Town, May 8th, 2026

www.ime.com.pa

A member company of
IME MARINE GROUP

PANAMA - DUBAI - SHANGHAI - SPAIN
COLOMBIA - PARAGUAY - NIGERIA





Classification Society?



Recognized Organization (RO)?

Recognized Security Organization (RSO)?

Statutory Certificates vs Class Certificates?



IACS Vs Non-IACS Classification Society?

How did it All Started?

Marine Underwriters Created Class Societies in 1764!

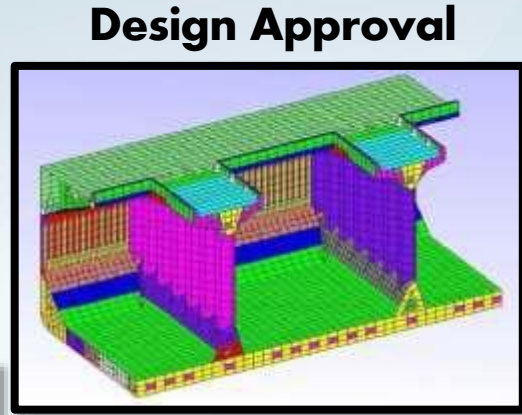


The initial practice by a group of merchant marine underwriters to try and come up with a distinct module for the assessment of ships, in the mid-1700s in London, England led to the formation of the first classification society Lloyd's Register in the year 1764, Bureau Veritas (1828), Det Norske Veritas (1864) and Germanischer Lloyd (1867).

Lloyd's Coffee House

More than 250 years of History & Legacy!

Classification Process



Rules

Rule Development



Research

Feedback

"CLASSIFICATION SOCIETY"

Approved Plans



Survey During Construction




Survey in Service

CLASSIFICATION SOCIETY CERTIFICATE

CLASS CERTIFICATE FOR HULL & MACHINERY

- Plan's Approval
- Examine the Manufacture of Parts
- Test Materials during Construction of Hull, Machinery, Equipment
- Conduct Periodical Surveys



 OVERSEAS MARINE CERTIFICATION SERVICES (OMCS)
CERTIFICATE OF CLASS

CLS No. 09054

Name of ship	Call Sign	Flag	IMO number ¹	Length (m)	Keel Laid
AEGIS ELITE	9LUZ307	SIERRA LEONE	8677287	100.91	16-05-2003
Type of Vessel	Port of Registry	Place of Build	Deadweight of Ship (Metric Tons) ²	GT/NT	
GENERAL CARGO SHIP	FREETOWN	CHINA	—	3844/2152	
Shipyard		Assigned Class No	Owner		
ZHEJIANG TAZHOU HADONG SHIPYARD, ZHEJIANG, CHINA		0419287	FEN JIN SHIPPING S.A.		

THIS IS TO CERTIFY:

1. That the above-mentioned ship has been surveyed by Overseas Marine Certification Services in accordance with Overseas Marine Certification Services/Criteria/rules and regulations.
2. That the technical committee of the Society is satisfied that the conditions of the hull, machinery and equipment have found in compliance with the Standards set forth by Overseas Marine Certification Services.
3. Current class survey status report, memoranda to owners and/or conditions of class are recorded on the ship class survey status issued by this Society.
4. That the vessel has entered this Society's records with the following classification character(s):

OMCS.HM.GENERAL CARGO SHIP


This certificate is valid until 19-07-2025 subject to continued compliance with Society's Rules and Regulations
(DD-MMM-YYYY)

Issued at SHANGHAI, CHINA Date of issue 04-09-2020
(Place of issue of certificate) (DD-MMM-YYYY)

LU YI
OMCS CLASS REPRESENTATIVE

IMPORTANT: This classification certificate shall become invalid and the ship classification is automatically suspended in accordance with the Rules if:

- i. The Annual survey has not been completed within three (3) months of the date of the annual survey.
- ii. The intermediate survey has not been completed within three (3) months of the due date of the third annual survey on each periodic cycle, unless the vessel is under attendance for completion of the relevant survey.
- iii. The renewal survey is not completed or under completion before the expiry date of the certificate of class, unless the survey has been accepted postponed prior the certificate's expiry date.

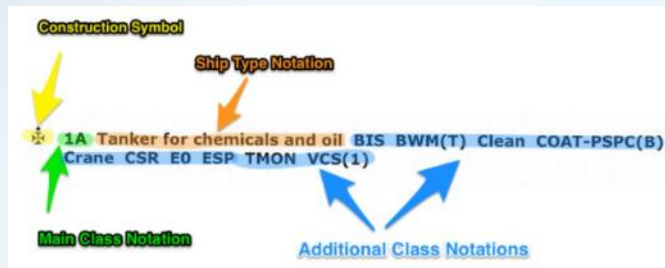
 For OMCS
This document is signed electronically in accordance with IMO FAL.5/Circ.30/Rev.2. Validation and authentication can be obtained from <https://trust.orion-imegroup.com/> by scanning the unique QR Code or by using the Unique Tracking No(UTN) 0006092323620203441 and the IMO No.8677287 of the vessel.
¹ In accordance with IMO Ship Identification Number Scheme adopted by the Organization by Resolution A.803 (19) / 2
² For all vessels, electrical tonnage and gross tonnage only.

Overseas Marine Certification Services (OMCS CLASS)
Form Code : CLS E-mail: surveys@omcsclass.org Web: www.omcsclass.org
UTN : 0006092323620203441

Page 1 of 4

Classification Society

Classification is a process which certifies adherence to a recognized set of technical standards, representing that a ship or other type of marine structure is structurally sound and mechanically fit for its intended purpose.



DNV GL
CLASSIFICATION CERTIFICATE
Issued under the provisions of the Rules of DNV GL

Particulars of Ship
Name of Ship: _____
Builder: _____
Yard No: _____
Owner: _____
IMO Number: _____

This is to certify:
that the above-mentioned ship has been surveyed by the DNV GL according to the Rules and that, upon completion of the survey on the **2014-08-20** the administration of the Society is satisfied that the condition of the hull, machinery and equipment was in compliance with the applicable Rule requirements for the following class notation:

**1A Tanker for chemicals and oil BIS BWM(T) Clean COAT-PSPC(B)
Crane CSR E0 ESP TMON VCS(1)**

Important assumptions and conditions related to maintenance and handling of the ship are found in the ship's Appendix to the Classification Certificate. Current status of surveys and conditions of class is given in the Class status issued by the Society.

A classification society for ships helps to achieve the following:

- Coming up with a detailed notational system for the vessels and constructions to be graded
- Ensuring that the vessels and constructions comply with this grading system by carrying out appropriate appraisals
- Assigning the required class or grade to a vessel and continued appraisals to ensure that the vessels adherence to the prescribed class notations

Right from the blueprints of a vessel's designing till its constructional aspects, the classification societies are required to pay strictest attention. However there are certain omissions like individual inspection of parts and components utilised in the ships' or any other marine constructions' structuring

MEMBERS

IACS International Association of Classification Societies



NON-IACS



OMCS CLASS

Overseas Marine Certification Services



ClassIBS

ISTHMUS BUREAU OF SHIPPING



MARINE CONSULTANTS,
SURVEYS & NAVAL REGISTER



Who Approves a Class Society?



Created in 1948 (the original name was the Inter-Governmental Maritime Consultative Organization, or IMCO, but the name was changed in 1982 to IMO).

IMO's first task was to adopt a new version of the International Convention for the Safety of Life at Sea (SOLAS), the most important of all treaties dealing with maritime safety. This was achieved in 1960..... Load Line Convention 1966.....MARPOL 1973.....

Countries Members of IMO

When Experience is Needed

IMO CONVENTIONS - STATUTORY REQUIREMENTS

Recognized Organizations

Flag State Responsibility!

SOLAS

CONSOLIDATED EDITION 2009

MARPOL

CONSOLIDATED EDITION 2011

Load Lines

2005 EDITION

RO's POSSIBLE AUTHORIZATIONS

Related mandatory IMO instruments on RO's function under possible authorization

SOLAS

- FSS Code
- FTP Code
- LSA Code
- Grain Code
- IMDG Code
- IMSBC Code
- INF Code

- IBC Code
- IGC Code
- ISM Code
- BLU Code
- 1994/2000 HSC Code
- ISPS Code, Res.MSC.215(8 2), Res, MSC.744(18),

MARPOL

- IBC Code, BCH Code, Nox Code, Res. MEPC.94(46)

Load Line Conv

Tonnage

BWC

AFS

RO's POSSIBLE CERTIFICATES

Certificates and documents, as required in mandatory IMO instruments, possibly authorized to issue or approve to ROs

SOLAS

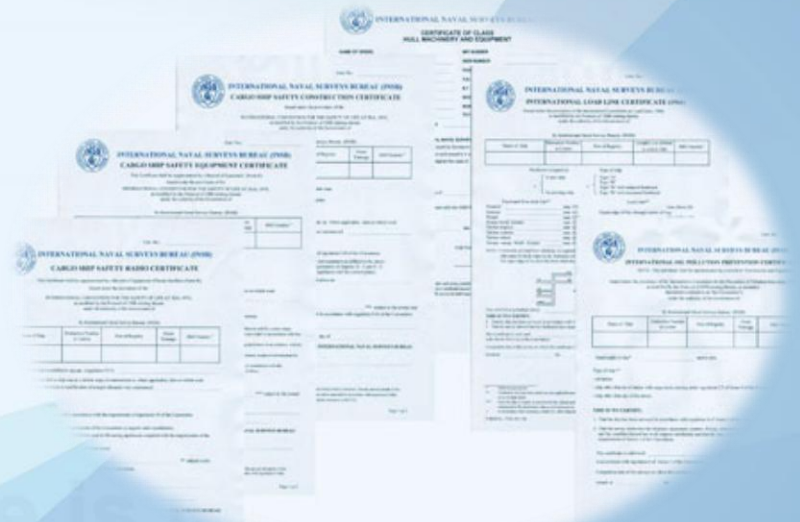
- Passenger Ship Safety Certificate
- Cargo Ship Safety Certificate
- Cargo Ship Safety Construction Certificate
- Cargo Ship Safety Equipment Certificate
- Cargo Ship Safety Radio Certificate

Load Line

- International Load Line Certificate

MARPOL

- International Oil Pollution Prevention Certificate
- International Pollution Prevention Certificate for the Carriage of Noxious Liquid Substances in Bulk
- International Sewage Pollution Prevention Certificate
- International Air pollution Prevention Certificate



DEFINITION



Recognized organization (RO) means an organization that has been assessed by a flag State in order to determine that the organization fulfils the requirements of the relevant rules and regulations described in Part 2 of the RO Code.



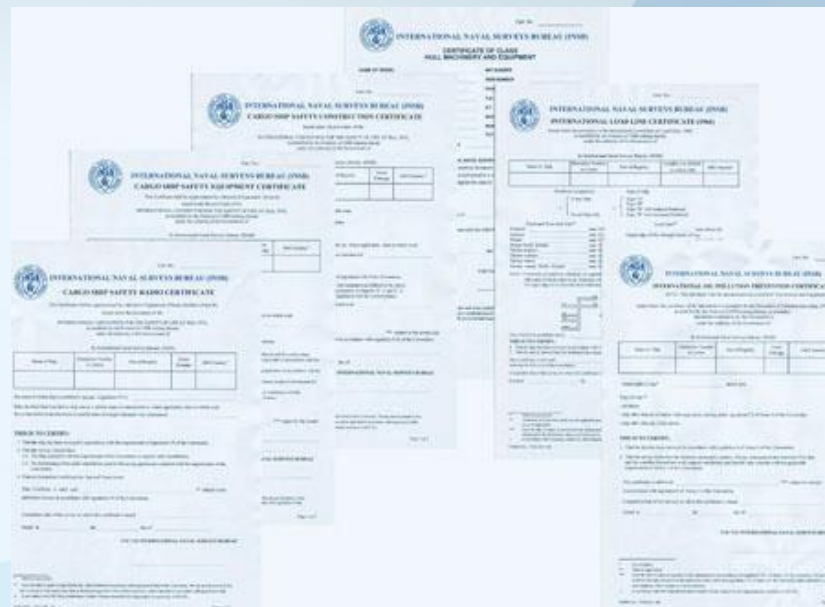
INTERNATIONAL
MARITIME
ORGANIZATION

ROCCODE

THE CODE FOR RECOGNIZED ORGANIZATIONS

ABOUT THE RO CODE

The Code is an international standard and consolidated instrument that provides a consolidated text containing minimum criteria against which recognized organizations (which may be authorized by flag States to carry out surveys and issue certificates on their behalf) are assessed towards recognition and authorization and give guidance for subsequent monitoring/oversight of ROs by Flag States.



The Code replaces the Specifications on the Survey and Certification Functions of Recognized Organizations Acting on Behalf of the Administration (resolution A.789(19)) and Guidelines for the authorization of Organizations acting on behalf of the Administration (A.739(18)).



RO CODE

THE CODE FOR RECOGNIZED ORGANIZATIONS

LEGAL BASIS

SOLAS

CONSOLIDATED EDITION 2009

MARPOL
CONSOLIDATED EDITION 2011

Load Lines
2005 EDITION

UNITED NATION CONVENTION ON THE LAW OF THE SEA (UNCLOS)

Article 94 – Duties of the flag States

The flag State must “effectively exercise its jurisdiction and control in administrative, technical and social matters over ships flying its flag” and take “such measures for ships flying its flag as are necessary to ensure safety at sea with regard, inter alia, to the construction, equipment and seaworthiness of ships...”, including “those necessary to ensure” “that each ships, before registration and thereafter at appropriate intervals, is surveyed by a qualified surveyor of ships...”.



Article 217 – Enforcement by flag States

“States shall ensure that vessels flying their flag or of their registry carry on board certificates required by and issued pursuant to international rules and standards...”. “States shall ensure that vessels flying their flag are periodically inspected in order to verify that such certificates are in conformity with the actual condition of the vessels.”

LEGAL BASIS LEGAL BASIS FOR AUTHORIZATION OF RO'S

The Administration may, however, entrust the inspections and surveys either to surveyors nominated for the purpose or to organizations recognized by it.

(SOLAS reg. I/6(a) and also the similar provisions in MARPOL, Load Lines, TONNAGE and AFS).



RECOGNIZED ORGANIZATIONS AS PER IMO

GLOBAL INTEGRATED SHIPPING INFORMATION SYSTEM (GISIS)

Public Home

Welcome to the Public Area

Ship Particulars
Ship identification and particulars.

Recognized Organizations
Information submitted by Member States under MSC/Circ.1010-MEPC/Circ.382.

Port Reception Facilities
Data on the available port reception facilities for the reception of ship-generated waste.

Pollution Prevention Equipment
Pollution prevention equipment required by MARPOL 73/78.

Facilitation of International Maritime Traffic
Reports on stowaway incidents (FAL.2/Circ.50/Rev.2); Reports on unsafe practices associated with the trafficking or transport of migrants by sea (MSC/Circ.896/Rev.1).

Maritime Security
Information communicated under the provisions of SOLAS regulation XI-2/13 (SOLAS chapter XI-2 and the ISPS Code).

Marine Casualties and Incidents
Data on marine casualties and incidents, as defined by circulars MSC-MEPC.3/Circ.3.

Contact Points
Electronic database for contact points.

Piracy and Armed Robbery
Reported incidents of piracy and armed robbery.

Non-mandatory Instruments
Comprehensive list of non-mandatory IMO instruments relating to safety and security.

Radiocommunications and Search and Rescue

- IMO GISIS 208 ROs recorded as of October 2024.

RECOGNIZED ORGANIZATIONS. AS RECORDED IN PSC REPORTS

- TOKYO MOU. **86 ROs** recorded on Annual Report 2025.
- PARIS MOU. **72 ROs** recorded on Annual Report 2025.
- USCG. **35 ROs** recorded on Annual Report 2025.
- VINA DEL MAR. **25 ROs** recorded on Annual Report 2025.
- INDIAN OCEAN MOU. **33 ROs** recorded on Annual Report 2025.
- CARIBBEAN MOU. **28 ROs** recorded on Annual Report 2025



Paris MoU



on Port State Control



RECOGNIZED ORGANIZATIONS VS CLASS SOCIETIES

Statutory certification and services means certificates issued, and services provided, on the authority of laws, rules and regulations set down by the Government of a sovereign State. This includes plan review, survey, and/or audit leading to the issuance of, or in support of the issuance of, **a certificate by or on behalf of a flag State as evidence of compliance with requirements contained in an international convention or national legislation.**

Classification Certification means certificates issued, and services provided, on **adherence to a recognized set of technical standards or Class Rules with regards to the construction and maintenance of the hull and machinery of a ship.**



Class Classification Society – As Per IACS Definition

- (i) publishes its own classification Rules (including technical requirements) in relation to the design, construction and survey of ships, and has the capacity to apply, maintain and update those Rules and Regulations with its own resources on a regular basis;
- (ii) verifies compliance with these Rules during construction and periodically during a classed ship's service life;
- (iii) publishes a register of classed ships;
- (iv) is not controlled by, and does not have interests in, ship-owners, shipbuilders or others engaged commercially in the manufacture, equipping, repair or operation of ships; and
- (v) is authorized by a Flag Administration as defined in SOLAS Chapter XI-1, Regulation 1 and listed accordingly in the IMO database, Global Integrated Shipping Information System (GISIS).



RECOGNIZED ORGANIZATIONS VS CLASS SOCIETIES.

SOLAS CHAPT. II-1 / Regulation 3-1 - Structural, mechanical and electrical requirements for ships

In addition to the requirements contained elsewhere in the present regulations, ships shall be designed, constructed and maintained in compliance with the structural, mechanical and electrical requirements of a classification society which is recognized by the Administration in accordance with the provisions of regulation XI-1/1, or with applicable national standards of the Administration which provide an equivalent level of safety.

RO CODE 2.2 Rules and regulations

The RO shall establish, publish and systematically maintain its rules or regulations, a version of which shall be provided in the English language, for the design, construction and certification of ships and their associated essential engineering systems as well as provide for adequate research capability to ensure appropriate updating of the published criteria.

RO CODE 4.1.2 Resources

The RO shall be able to document extensive experience in assessing the design, construction and equipment of ships and the capability to effectively perform statutory certification and services on behalf of a flag State.

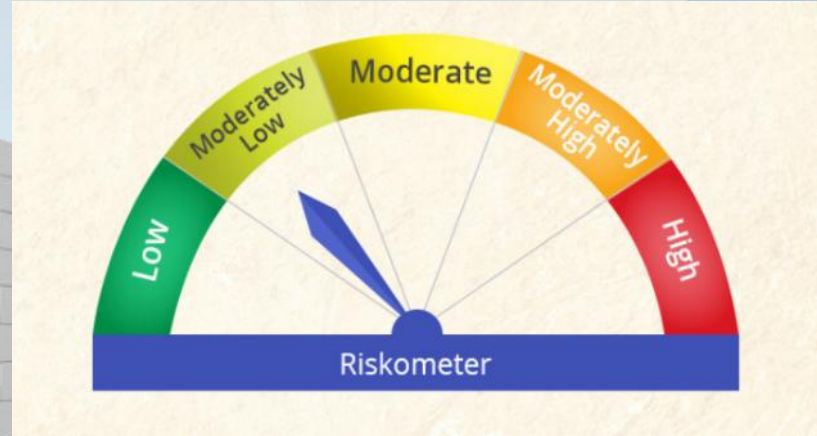
ISPS CODE

Recognized Security Organization (RSO)



ROs: an organization that has been assessed to comply with requirements, as set out in resolutions A.739(18), as amended, and A.789(19) and is delegated to carry out the inspection and surveys as required by IMO instruments by the Administrations (as we may understand from IMO instruments).

RSOs: an organization with appropriate expertise in security matters and with appropriate knowledge of ship and port operations authorized to carry out an assessment, or a verification, or an approval or a certification activity, as required by SOLAS XI-2 or by part A of the ISPS Code (*ref.SOLAS XI-2/1.16*)



UNDERWRITERS CHALLENGES

When Experience is Needed.



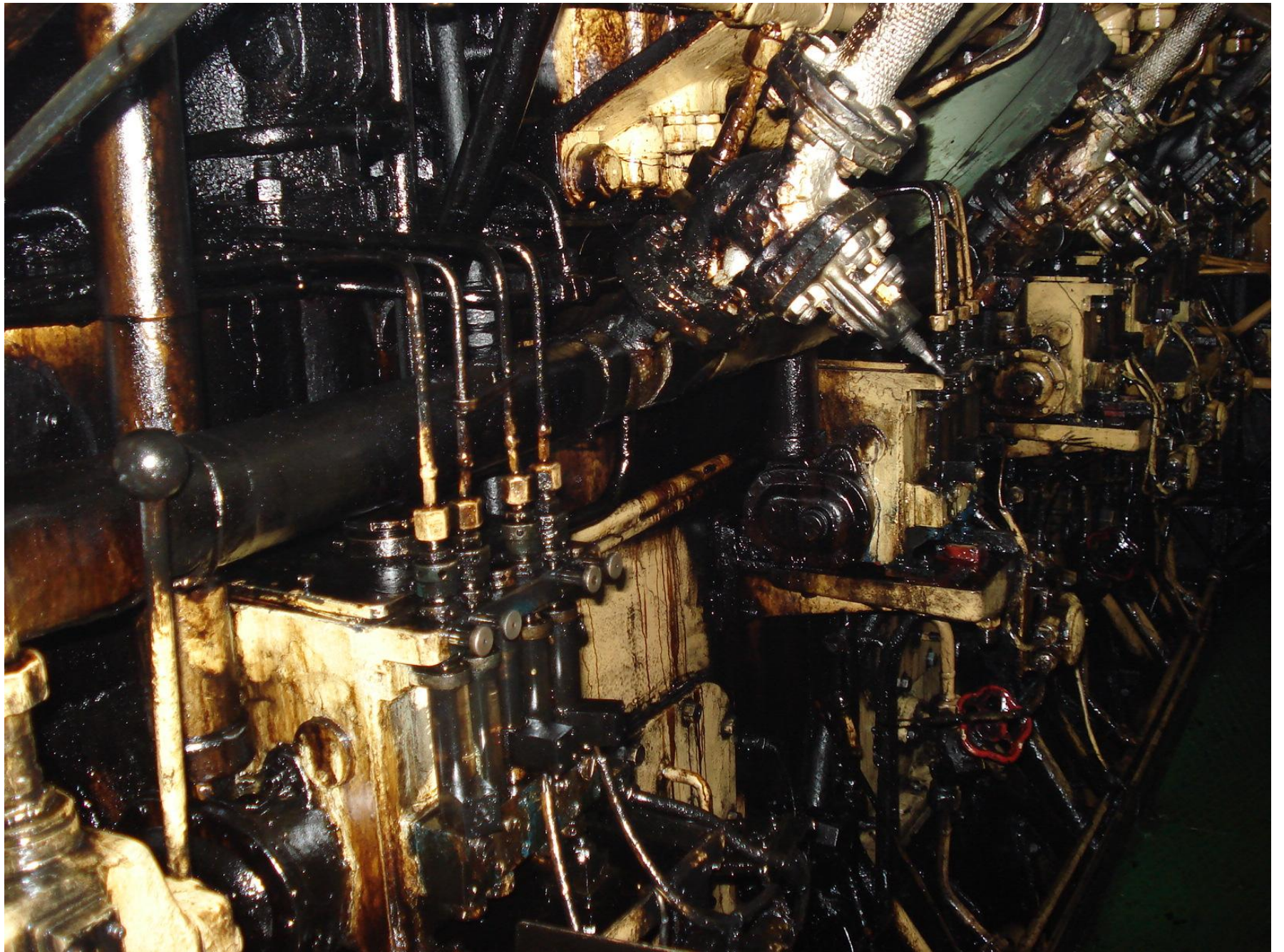
How to Measure Risk?

- 1) Who Pays the Class Societies?
- 2) Is Classification of Ships Mandatory?
- 3) How to differentiate Between Class Societies (IACS/NON-IACS)?
 - Port State Control History (MOU's)
 - Evidence of Last Drydock/Engine Maintenance Records
 - Last Class/Certificate Status



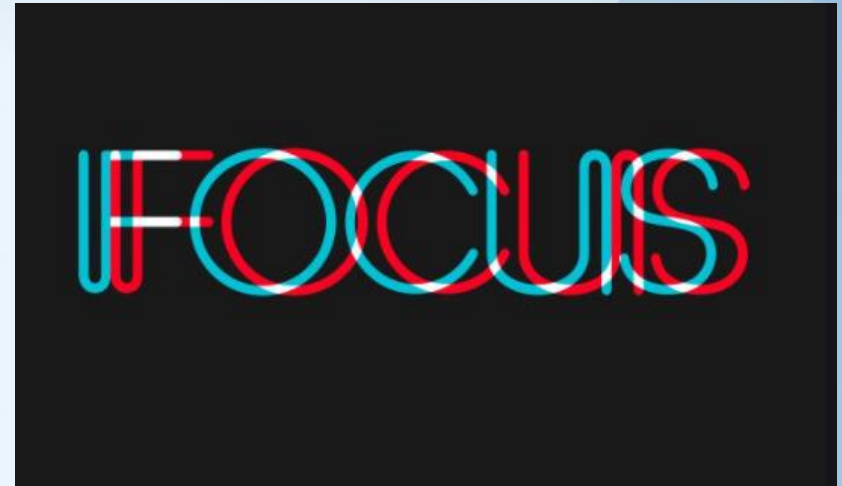






General Risk Indicators

- 1) Age
- 2) Type
- 3) Trading Pattern
- 4) Operational Restrictions
- 5) Flag State
- 6) Class Society/RO
- 7) PSC Performance
- 8) Last Drydock
- 9) Engine Maintenance History - PMS/CMS implemented?
- 10) Latest Class/Certificate Status
- 11) Management Company Experience
- 12) Claims History



IME

INTERNATIONAL MARINE EXPERTS

When Experience is Needed,
Trust the Experts

THANK YOU



Eng. Javier Bru.

CEO – International Marine Experts (IME)

Cape Town, May 8th, 2026

www.ime.com.pa

A member company of
IME MARINE GROUP

PANAMA - DUBAI - SHANGHAI - SPAIN
COLOMBIA - PARAGUAY - NIGERIA

